



Suzuki Modular Instrument System (SMIS) 4" Display Multi-function Gauge Installation and Operation Instructions

Copyright © 2006 American Suzuki Motor Corp.
All rights reserved.

No part of this manual may be copied, reproduced, republished, transmitted or distributed for any purpose, without prior written consent of American Suzuki Motor Corp. **Any unauthorized commercial distribution of this manual is strictly prohibited.**

Table of Contents

Section 1: Introduction	4
Section 2: Installation	6
Preparation.....	6
Recommended Tools and supplies.....	6
Installation Sequence.....	6
Mounting the Unit	6
Connecting to a NMEA 2000 Network	8
Understanding this manual	12
Menu Commands.....	12
Section 3: Operation	13
Boat Setup	13
Basic Menu	14
Pages	14
Viewing Pages (Page Screen Rotation).....	14
Page Options.....	15
Engine Trim.....	15
Diagnostics.....	15
Fuel Manager	15
GPS Position.....	15
Single Analog.....	15
Dual Analog.....	16
Quad Analog.....	16
Single Digital.....	16
Dual Digital.....	16
Quad Digital.....	16
Synchronizer.....	16
Trim Tabs.....	16
Pages Menu	17
Adding Pages.....	17
Removing Pages	17
Page Scrolling.....	18
Pop-Ups Setup.....	18
Screen.....	20
Backlight.....	20
BLight Sync	20
Contrast	20
Reverse Video	21
Audio Setup	21
System Setup Menu	22
Engine Data.....	22
Engine Warnings.....	23

Bus Devices.....	23
Sonar Alarms.....	24
Engine/Tank Configuration.....	25
Reset Values:.....	26
NMEA Info.....	26
System Information.....	26
Speed Range.....	26
Pressure Ranges.....	27
Change Units.....	28
Fuel Setup.....	30
Refill Tank.....	30
Partial Fill.....	30
Economy Speed Source.....	31
Fuel Remaining Source.....	31
Reset Trip Fuel.....	32
Reset Seasonal.....	32
Customizing Pages.....	33
Single Analog.....	33
Dual Analog.....	34
Quad Analog.....	34
Single Digital.....	35
Dual Digital.....	36
Quad Digital.....	37
Trim Tabs.....	38
Customize Trim Tabs:.....	38
Fuel Manager.....	38
Section 4: Sensor Configuration & Calibration.....	39
Temperature Configuration.....	41
Fuel Flow Configuration.....	Error! Bookmark not defined.
Fluid Level Configuration.....	43
Fluid Level menu.....	44
Reset Values.....	48
Calibrating Electronic Sensors.....	48
Calibrating Fluid Level.....	48
2-Point Calibration.....	49
3-Point Calibration.....	49
5-Point Calibration.....	50
Calibrating Fuel Flow.....	Error! Bookmark not defined.
Fuel Flow Accuracy.....	Error! Bookmark not defined.
Refill Tank.....	Error! Bookmark not defined.
Reset Calibration.....	Error! Bookmark not defined.
Partial Fill.....	Error! Bookmark not defined.
Calibrating Trim Tabs.....	51

Section 1: Introduction

Thank you for buying the Suzuki Modular Instrument System (SMIS) 4" display. Your unit is a high-quality, multi-function, digital gauge designed to work with NMEA 2000® network system devices.

Important

⚠ WARNING / CAUTION / NOTE

Please read this manual and follow its instructions carefully. To emphasize special information, the symbol ⚠ and the words **WARNING**, **CAUTION** and **NOTE** have special meanings. Pay special attention to the messages highlighted by these signal words:

⚠ WARNING

Indicates a potential hazard that could result in death or injury.

CAUTION

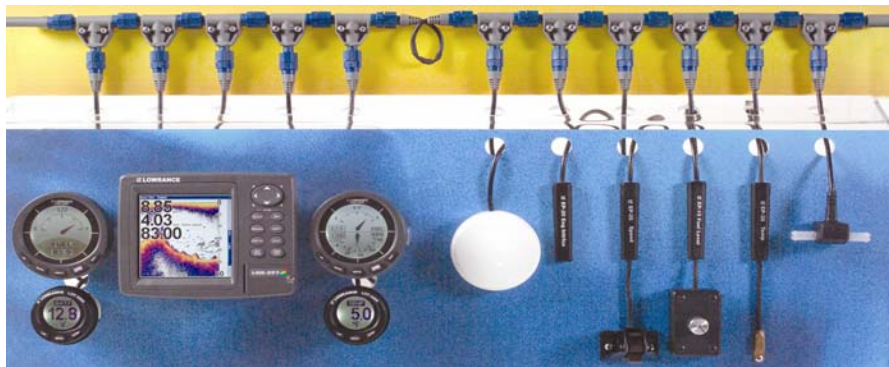
Indicates a potential hazard that could result in boat or equipment damage.

NOTE: Indicates special information to make maintenance easier or instructions clearer.

CAUTION

Installing NMEA 2000 devices is significantly different from installing Non NMEA components/devices. You should read all of the installation instructions before proceeding.

This gauge will *only* work with a NMEA 2000 network. It *MUST* be connected to a NMEA 2000 network or it *WILL NOT* function. When properly installed, the SMIS 4" instrument will display information from a variety of Electronic sensors and other NMEA 2000 devices connected to the network.



A NMEA 2000 network using SMIS components.

All Suzuki NMEA 2000-capable devices are either NMEA 2000-certified or certification is pending.

To get started with your new Suzuki gauge, first read the installation section. It contains instructions for installing the SMIS 4" display.

After you've read those instructions, install the gauge and any sensors you may have purchased, then read the rest of this manual. Each sensor comes with its own installation instruction sheet, but this manual describes how the gauge operates with each sensor, and how to configure and calibrate the sensors. Your gauge packaging also includes another manual which contains complete instructions for creating or expanding a NMEA 2000 network.

Suzuki teams up the powerful NMEA 2000 network standard with a fast-growing, cutting-edge family of Electronic Sensors. At press time, the product line includes the Fluid Level, Engine interface, Speed, Temp and Pressure sensors.

And what's more exciting, there are others on the way! When you're ready to expand your network, see the Suzuki Genuine Accessory Catalog for ordering information.

CAUTION
<p>The storage and operation temperature range for your unit is from -4 degrees to +167 degrees Fahrenheit (-20 degrees to +75 degrees Celsius). Extended storage or operation in temperatures higher or lower than specified will damage the liquid crystal display in your unit. This type of damage is not covered by the warranty. For more information, contact the</p>

Section 2: Installation

Preparation

The design of the SMIS 4" display allows convenient mounting in the dash of your boat, or it can be mounted on any flat panel at least four inches in diameter.

To mount the SMIS 4" display in the dash, first make sure there is sufficient clearance behind the panel in the desired location. Also, see that there is adequate room to connect power and transducer cables. At least 3-1/2 inches are needed behind the surface of the dash to clear all connectors and wiring.

Recommended Tools and supplies

Recommended tools for this job include: hole saw, drill, drill bit (for starter hole). Required supplies for this job include: "U" bracket, lock washers and wing nuts (included).

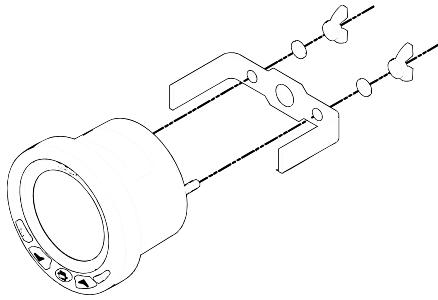
Installation Sequence

You can install this gauge in some other order if you prefer, but we recommend this installation sequence, which is summarized below:

1. Determine the location for the gauge so you can plan how and where to route the cables. This will help you make sure you have enough cable length for the desired configuration.
2. Determine the location of the nearest device on the boat's NMEA 2000 network, along with the route of the gauge's network cable.
3. Determine the location for the alarm buzzer and its wire route.
4. If you want to turn on the gauge backlights whenever you turn on your dashboard lights, locate your boat's dash light switch and determine how to route the gauge's dash light wires to it.
5. Install the gauge in a standard 3-3/8 inch (86 mm) hole in the dash. If no 3-3/8 hole is available in the dash, you will have to use a hole saw to cut a mounting hole. See instructions for Mounting the Unit below.
6. Connect the buzzer wires and install the buzzer. If desired, connect the dash light wires to the boat's dash light switch.
7. Connect the network cable to the NMEA 2000 network.

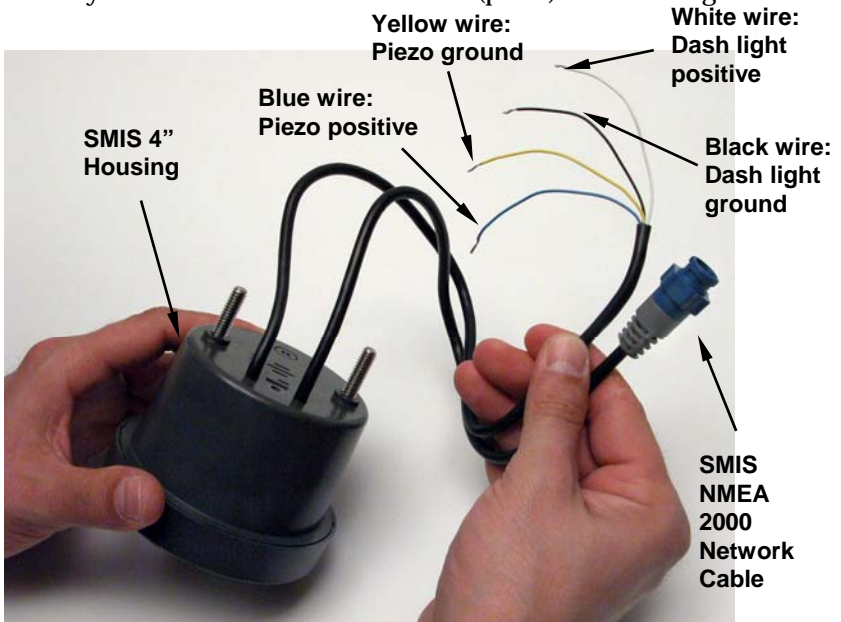
Mounting the Unit

If no standard mounting hole is available in the dash, cut a 3-3/8 inch (86 mm) diameter mounting hole with a hole saw. A "U" bracket is supplied to hold the unit to the dash. Place it over the threaded studs on the back of the unit and secure it with the lock washers and nylon wing nuts provided with the unit.



Secure unit to the dash using "U" bracket as shown.

The bracket is designed to secure the unit to a dash with a thickness of 2 mm. If your dash is thicker than 2 mm, the "U" bracket will be too long. Simply place washers or spacers between the unit and the bracket until you can tighten the wing nuts and secure the unit in place. You are now ready to wire the unit to the buzzer (piezo) and dash lights.



SMIS 4" display with power cable wiring and NMEA 2000 Cable Connection.

Connecting the SMIS 4" display to the buzzer (piezo), the buzzer sounds when alarm and level warning are triggered. Wiring the unit to the dash lights, will turn on the SMIS 4" display backlight when the dash lights are turned on.

If you do not want to use the buzzer or dash light wires, clip the bare ends off the wires, then cap them with wire nuts or electrical tape.

To wire unit to the buzzer (piezo):

1. Connect the SMIS 4" display yellow buzzer ground wire to the buzzer (piezo) ground wire.
2. Now attach the SMIS 4" display white buzzer positive wire to the buzzer (piezo) positive wire.
3. Select a buzzer location that is protected from the elements, but will still allow you to hear it. Use the adhesive back on the buzzer to mount the buzzer to a flat, clean surface.

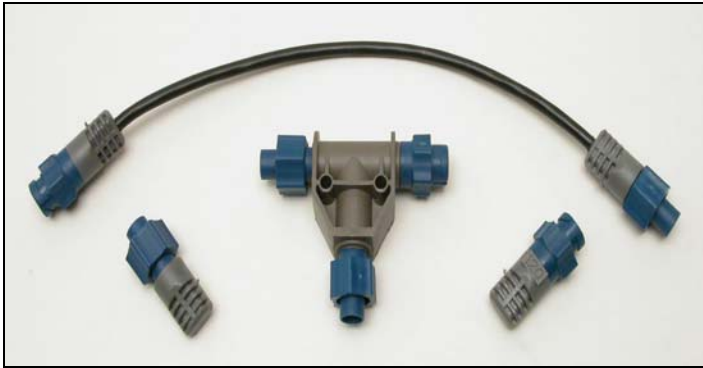
To wire unit to dash lights:

1. Connect the SMIS 4" display black dash light ground wire to the dash light ground wire.
2. Now attach the SMIS 4" display white dash light positive wire to the dash light positive wire.

Connecting to a NMEA 2000 Network

A network bus is an installed and operational network cable (backbone) running the length of your boat, already connected to a power supply and properly terminated. Such a bus provides network connection nodes at various locations around your boat. For more detailed information about setting up a NMEA 2000 network, refer to the *NMEA 2000 Networks General Information* document included with your gauge.

This is similar to the telephone wiring in a house. If you pick up a phone in your living room, you can hear someone talking into the phone in the bedroom.



Pictured above is a 2 foot extension cable, T connector, 120-ohm male terminator and 120-ohm female terminator.

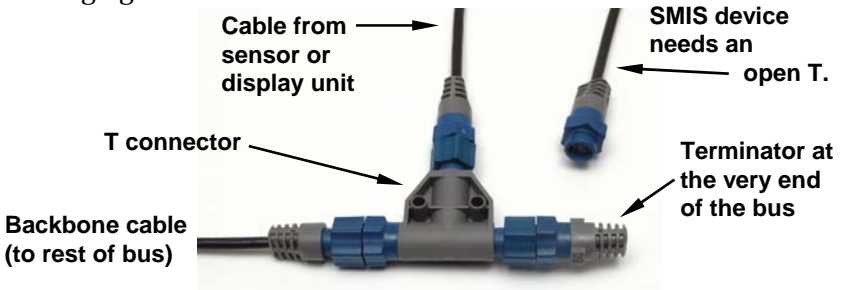
For complete instructions on setting up a new NMEA 2000 network or expanding an existing one, see the other document packed with your gauge, *"Setup and Installation of NMEA 2000 Networks, General Information"*.

Network Nodes

A network bus is built of network nodes spread along a backbone. Network nodes are made by fitting T-shaped connectors into the backbone (using the sockets on the sides), and attaching any NMEA 2000 device at the bottom of the "T."

Using our telephone example, the T connectors are similar to telephone jacks. The backbone is like the phone wiring running through a house. Phones in a house must be connected to each other to communicate, and in the same way only sensors and display units plugged into the NMEA 2000 network can share information.

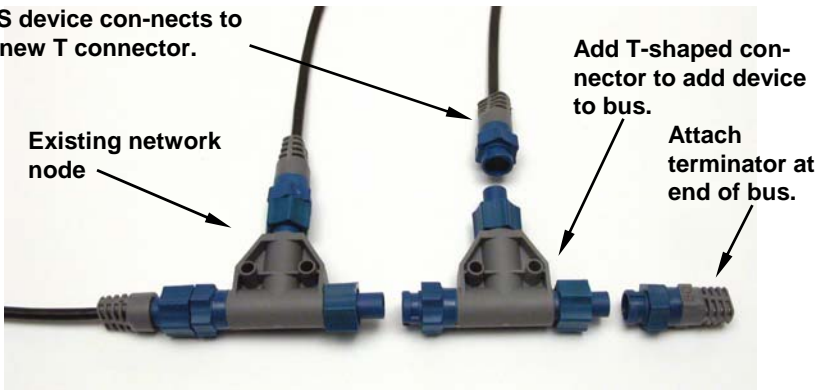
Connections found in the middle of the bus will have one or more of these T-shaped connectors with the backbone cables plugged into both sides. Connections at the end of a network will have the backbone plugged into one side, and a terminator plugged into the other, as shown in the following figure.



NMEA 2000 network node located at the end of a NMEA 2000 bus.

Adding a Network Node

You can add a node anywhere along the network backbone where a connection already exists. This connection could be at the end of the network (between a T connector and a terminator), between two T connectors, between a T connector and a backbone extension cable, or between two extension cables. Wherever you want to add the new node, simply separate the sockets of the old connection and attach your new T connector between them.



Add a new device to a NMEA 2000 bus by attaching a T connector between two T connectors, between a T connector and the end terminator, or between two backbone extension cables.

If you want to add a node at the end of the line (as shown in the previous figure), remove the terminator from the very last connector, securely attach the new T connector, and then attach the terminator on the new connector. Either method will allow you to add a device.

NOTE: If you add a Fluid Level or Water Pressure Sensor to the network, you must go through Boat Setup so the engine-tank configuration will be consistent among the sensors in the network. Follow the Boat Setup procedure included in Section 3: Operations.

Additional Network Information

Further instructions on creating or expanding a SMIS network are illustrated in the NMEA 2000 network setup booklet.

Understanding this manual

Most instructions in the manual are listed as numbered steps. Keypad commands appear as boldface type, making it easy to skim through instructions and pick out what command to use.

Up and Down

The Up and Down keys help you navigate through menus, select (highlight) menu items, and are used to make adjustments to input numbers in dialog boxes. They are shown as **UP** and **DOWN** in this manual.

Menu

When instructed to press the menu key, menu will be shown as **MENU**. The menu key is used to access the main menu.

Pages/Enter

The Pages/Enter key is used to execute commands and to scroll forward through pages set for display on the main screen. The Pages/Enter key will be shown as **ENTER** in this manual.

Exit

The Exit key is used to close menus and remove dialogs, windows and messages from the screen. Shown as **EXIT** in this manual, it is also used to scroll backward through pages set for display on the main screen.

Menu Commands

A menu command or a menu option will appear in small capital letters, like — **ROUTE PLANNING**. When you see a word in command text, you are supposed to take action, by selecting (highlighting) this command or option from a menu.

Instructions = Menu Sequences

Most functions performed with this unit are described as a sequence of keystrokes.

Instructions for accessing a menu will look like this:

1. To access the Bus Devices list, press **MENU**, use the **UP** and **DOWN** keys to select **SYSTEM SETUP** and press **ENTER**.
2. Highlight **Bus DEVICES** and press **ENTER**. The Bus Devices list will appear, showing all devices on your NMEA 2000 network.

Section 3: Operation

The displays and settings in this digital gauge are controlled by a five-button keypad. The buttons are **UP**, **DOWN**, **MENU**, **ENTER** and **EXIT**. The **MENU** key gives you access to the basic menu. The **UP** and **DOWN** keys are used to scroll through and highlight menu items. The **PAGES/ENTER** key (also referred to as the **ENTER** key) allows you to scroll forward through pages, execute commands and select items from menus. The **EXIT** key is used to close menus and scroll backward through pages.



SMIS 4" display keypad.

Boat Setup

When the SMIS 4" display is turned on the first time, the Boat Setup menu will appear. You will not be able to proceed without completing Boat Setup. If, however, you have one or more of the following devices — engine interface, Fluid Level or Pressure Sensor — already configured in the network with the same engine-tank configuration, you **WILL NOT** have to go through boat setup when adding a new gauge to the network. After adding the gauge to the network, the Boat Setup menu will be cleared from the screen and the unit will begin normal operation in 1-2 seconds.

NOTE: If you add a Fluid Level or Water Pressure sensor to the network, you must go through Boat Setup so the engine-tank configuration will be consistent among sensors in the network.

To execute Boat Setup:

1. With Boat Setup highlighted on the screen, press **ENTER**. A menu will appear, allowing you to choose the number of engines and fuel tanks on your vessel. The Boat Setup menu options are: 1 Eng/1 Tank, 1 Eng/2 Tank, 2 Eng/1 Tank, 2 Eng/2 Tanks, 3 Eng/1 Tank or 3 Eng/3 Tanks.

2. Use the **UP** and **DOWN** keys to select the engine-tank configuration that applies to your vessel and press **ENTER**. After setting the engine/tank configuration, the Tank Size menu will appear with up to three options (Port Tank, Center Tank and Starboard Tank), depending on the engine tank configuration you chose. (If you selected one tank during Boat Setup, you will be taken directly to the Setting Tank Size Window in Step 3.)

3. Select the desired tank and press **ENTER**, which will open the Setting Tank Size window.

4. Use the **UP** and **DOWN** keys to input the number of gallons the tank will hold and press **ENTER**.

Press **EXIT** and repeat steps 3 and 4 for each of the remaining tanks.

5. After all tanks on your vessel have been set up, press **EXIT** repeatedly to get back to the main display.

NOTE: If you chose the wrong engine-tank configuration during Boat Setup, you will have to reset your engine-tank configuration to get back to Boat Setup. See detailed instructions on resetting engine-tank configuration on page 25.

Basic Menu

The SMIS 4" display has 12 page screens that can be customized with the data of your choosing. Each page has its own basic menu. Basic menus vary from page to page, but all contain these standard menu options: Pages, Screen, Audio Setup and System Setup. Pages that can be customized also include Customize on the basic menu.

Pages

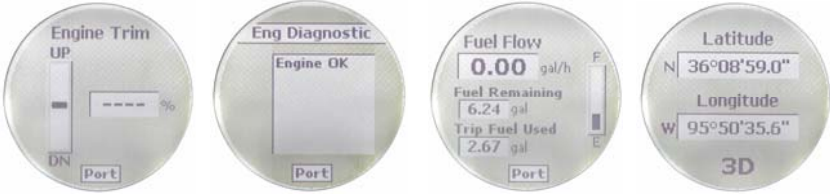
Your unit can display up to 16 page screens. You could, for example, add 12 different pages then add some pages more than once, customizing them differently each time.

Viewing Pages (Page Screen Rotation)

The Page Screen Rotation consists of multiple pages that have been set up for display. Once pages have been added to the page screen rotation, they can be set to scroll across the screen automatically or manually. Use the **ENTER** and **EXIT** keys to manually scroll pages across the screen. Pressing the **ENTER** key moves the scroll in one direction. Pushing the **EXIT** key moves the scroll in the other direction. You will use the Page Scrolling feature to set up pages for automatic scrolling. See page 18 for more detailed information about Page Scrolling.

Page Options

The SMIS 4" display has 12 different pages that may be added to the page screen rotation. They are: Engine Trim, Diagnostics, Fuel Manager, GPS Position, Single Analog, Dual Analog, Quad Analog, Single Digital, Dual Digital, Quad Digital, Synchronizer and Trim Tabs.



Engine Trim (from left to right), Diagnostics, Fuel Manager and GPS Module page.

Engine Trim

The Engine Trim page displays engine position data in percentages. It can not be customized.

Diagnostics

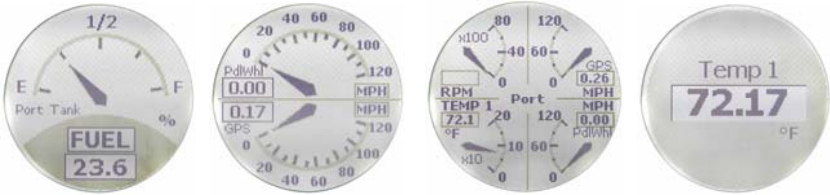
The Engine Diagnostic page displays engine performance data. It can not be customized.

Fuel Manager

The Fuel Manager page has a digital readout capable of displaying nine data categories, including fuel flow, fuel used and fuel remaining.

GPS Position

The GPS position page displays the boater's position in Latitude-Longitude, using Degrees-Minutes or Degrees-Minutes-Seconds as the units of measure.



Single Analog (from left to right), Dual Analog, Quad Analog and Single Digital page.

Single Analog

The Single Analog page consists of a single analog gauge that can be customized to display a wide assortment of data.

Dual Analog

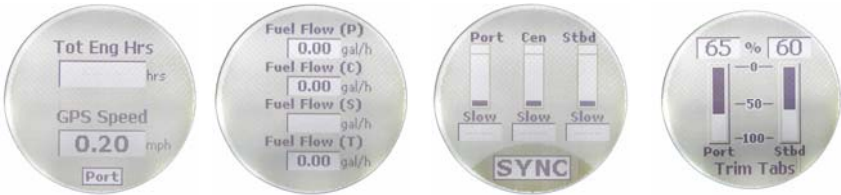
The Dual Analog page features two analog gauges stacked one on top of the other. Both gauges can be customized to display a wide assortment of data.

Quad Analog

The Quad Analog page is divided equally into four parts, each containing a small analog gauge. All four gauges can be customized to display a wide assortment of data.

Single Digital

The Single Digital page consists of a digital data box that can be customized to display a wide assortment of data, ranging from ALR:V (Alternate Voltage) and BAT:V (Battery Voltage) to WTR:S (Water Speed), GND:S (Ground Speed) and Tach (Tachometer).



Dual Digital (from left to right), Quad Digital, Synchronizer and Trim Tabs page.

Dual Digital

The Dual Digital page features two digital data boxes that can be customized to display a variety of data including, ENG:O:P (Engine Oil Pressure), ENG:L (Engine Load) and ENG: Hr (Total Engine Hours).

Quad Digital

The Quad Digital page has four customizable digital data boxes stacked one on top of the other capable of displaying a wide assortment of data from Seasonal Fuel and Fuel Used to Depth and Temperature.

Synchronizer

The Synchronizer page displays RPM for up to three engines. It allows users to synchronize engines for smoother performance. The Synchronizer page can not be customized and will NOT be available for one-engine configurations.

Trim Tabs

The Trim Tab page monitors the position of the Trim Tabs using degrees or percentages as units of measure.



Scrolling list of page options (left) with basic menu categories (right).

Pages Menu

The Pages menu can be accessed from any of the page displays. It has four options: Add Page, Remove Page, Page Scrolling and Pop-Ups Setup.

Add Page

The Adding Pages command allows you to add pages to the page screen rotation. Pages that are not added to the page screen rotation will not be displayed.

To add a page to the display:

1. Press **MENU**, use the **UP** and **DOWN** keys to select **PAGES** and press **ENTER**. A menu will pop up with four options: Add Page, Remove Page, Page Scrolling and Pop-Ups Setup.
2. Select **ADD PAGE** and press **ENTER**.
3. Highlight the page you want to display and press **ENTER**. The following message will appear: *Press Enter to add the selected page.*
4. Press **ENTER**, which will take you back to the main display, where the page you chose will be shown on the screen.

NOTE: The SMIS 4" display can have up to 16 pages in the page screen rotation at one time. If you try to add a 17th page, the following message will appear: Number of Pages has Reached Max. In that case, you will have to remove a page before another page can be added to the display.

Remove Page

The Removing Pages command allows you to remove pages from the page screen rotation. You will have to scroll the page you want to remove on to the screen before accessing Remove Pages from the Pages menu.

To remove a page from the display:

1. First, scroll the page you want to remove on to the screen. Press **MENU**, use the **UP** and **DOWN** keys to select **PAGES** and press **ENTER**.
2. Highlight **REMOVE PAGE** and press **ENTER**. The following message will appear: *Press Enter to Remove current Page.*
3. Press **ENTER**, which will take you back to the main display.

Page Scrolling

Once all the pages you want to monitor have been added to the main display, you will be able to view them in two ways. You can scroll through pages manually by using the **ENTER** and **EXIT** keys or utilize the Page Scrolling function to have pages automatically scroll across the screen at an interval of your choosing.

To activate Page Scrolling:

1. Press **MENU**, use the **UP** and **DOWN** keys to select **PAGES** and press **ENTER**.
2. Select **PAGE SCROLLING** and press **ENTER**. The Page Scrolling menu will appear with two settings: Off and Set Time.
3. Highlight **SET TIME** and press **ENTER**. (You would select **OFF** to turn off Page Scrolling.)
4. Use the **UP** and **DOWN** keys to select an interval between one and 60 seconds and press **ENTER**. You will be taken back to the main display.

Pop-Ups Setup

This feature helps you keep tabs on RPM, Engine Trim and the Trim Tab pages by launching a pop up window if selected thresholds for any of the three pages are exceeded. If, for example, a RPM pop up is set with a threshold of 1,000 RPM, a pop up window will appear on the screen if RPM exceeds 1,000 RPM.

To set RPM Pop up:

1. Press **MENU**, use the **UP** and **DOWN** keys to select **PAGES** and press **ENTER**.
2. Highlight **POP-UPS SETUP** and press **ENTER**.
3. The Pop-Ups Setup menu will appear with four options: RPM, Engine Trim, Trim Tabs and Stay-on Time. Select **RPM** and press **ENTER**. The RPM menu will appear with two options: Off and Set Threshold.
4. Highlight **SET THRESHOLD** and press **ENTER**. (You would select **OFF** to turn off a threshold.)
5. Use the **UP** and **DOWN** keys to select a threshold between 50 and 3,000 RPM and press **ENTER**. You will be taken back to the main display.

To set Engine Trim Pop-up:

1. Press **MENU**, use the **UP** and **DOWN** keys to select **PAGES** and press **ENTER**.
2. Highlight **POP-UPS SETUP** and press **ENTER**.
3. Select **ENGINE TRIM** and press **ENTER**. The Engine Trim menu will appear with two options: Off and Set Threshold.
4. Highlight **SET THRESHOLD** and press **ENTER**. (You would select **OFF** to turn off a threshold.)
5. Use the **UP** and **DOWN** keys to select a threshold between 3% and 50% and press **ENTER**. You will be taken back to the main display.

To set Trim Tabs Pop up:

1. Press **MENU**, use the **UP** and **DOWN** keys to select **PAGES** and press **ENTER**.
2. Highlight **POP-UPS SETUP** and press **ENTER**.
3. Select **TRIM TABS** and press **ENTER**. The Trim Tabs menu will appear with two options: Off and Set Threshold. (You would select **OFF** to turn off a threshold.)
4. Highlight **SET THRESHOLD** and press **ENTER**.
5. Use the **UP** and **DOWN** keys to select a threshold between 3% and 50% and press **ENTER**. You will be taken back to the main display.

Stay-On Time:

The Stay-On Time command allows you to choose how long a pop up will remain on the screen once it is triggered. The Stay-On Time setting will affect all three Pop-up Pages.

1. Press **MENU**, use the **UP** and **DOWN** keys to select **PAGES** and press **ENTER**.
2. Highlight **POP-UPS SETUP** and press **ENTER**.
3. Select **STAY-ON TIME** and press **ENTER**.
4. Use the **UP** and **DOWN** keys to input the amount of time a pop up will remain on the screen. The stay-on time for a pop up may be set between 2 and 15. Press **ENTER**. You will be taken to the main display.



Basic menu with Screen highlighted (left). Screen option menu (center) with Set Backlight window (right).

Screen

Accessing the Screen menu allows you to make adjustments to the appearance of the screen. There are three options: Backlight, Contrast and Reverse Video.

Backlight

The Backlight feature allows you to brighten or dim the light in the SMIS 4" display.

To adjust Backlight:

1. Press **MENU**, use the **UP** and **DOWN** keys to select **SCREEN** and press **ENTER**.
2. Highlight **BACKLIGHT** and press **ENTER**. The Backlight menu will appear with two options: BLight Sync (Backlight Sync) and Adjust.
3. Select **ADJUST** and press **ENTER**.
4. A vertical scrollbar will appear. Use the **UP** and **DOWN** keys to set the backlight to a desired level. Press **EXIT** to return to the Backlight menu.

Backlight Sync (BLight Sync)

By turning on the Backlight Sync function, all the backlight levels for components on the network may be controlled by any of the gauges or head units in the network. If you adjust the backlight on one of the gauges or display units, the backlight levels from the other gauges and display units will be changed, too.

To set Backlight Sync

1. Press **MENU**, use the **UP** and **DOWN** keys to select **SCREEN** and press **ENTER**.
2. Highlight **BACKLIGHT** and press **ENTER**. The Backlight menu will appear with two options: BLight Sync (Backlight Sync) and Adjust.
3. Highlight **BLIGHT SYNC** and press **ENTER**, which will open the BLight Sync menu with two options: On and Off. Turning on Backlight Sync will cause the backlight level for all gauges on the network to be synchronized with the backlight level on your SMIS 4" display.
4. Select the desired option (**ON** or **OFF**) and press **ENTER** to be directed to the main display.

Contrast

The Contrast feature allows you to darken or lighten the display screen.

To adjust Contrast:

1. Press **MENU**, use the **UP** and **DOWN** keys to select **SCREEN** and press **ENTER**. Select **CONTRAST** from the Screen menu and press **ENTER**, which

will launch the Contrast Adjustment vertical scrollbar.

2. Use the **UP** and **DOWN** keys to move the bar to a desired level.
3. Press **EXIT** to return to the Screen menu or press **ENTER** to return to the main display.



Contrast is highlighted on the Screen menu (left). The Contrast Adjust window (center). Reverse Video highlighted on Screen menu (right).

Reverse Video

The Reverse Video function swaps the position of dark and light colors. The dark text, which is on top of a light background, will be switched to light text on top of a dark background. This feature, typically, is used to darken the display for nighttime use.

To turn on Reverse Video:

1. Press **MENU**, use the **UP** and **DOWN** keys to select **SCREEN**, and press **ENTER**.
2. Highlight **REVERSE VIDEO** and press **ENTER**. You will notice the dark and light colors have been swapped for one another.
3. To switch Reverse Video to its previous setting, return to the Screen menu, select **REVERSE VIDEO** and press **ENTER**.
4. Press **EXIT | EXIT** to return to the main display.



Audio Setup highlighted on the basic menu (left). Audio Setup menu (center) with Key Sounds menu (right).

Audio Setup

Audio Setup gives you access to the unit's audio functions. There are

two options on the Audio Setup menu: Key Sounds and Alarm Sounds.

Key Sounds

When Key Sounds are turned on, a tone will sound every time you push the **UP**, **DOWN**, **MENU**, **ENTER** and **EXIT** keys. When you turn off Key Sounds, no tone will sound when you depress the keys.

1. Press **MENU**, use the **UP** and **DOWN** keys to select **AUDIO SETUP**, and press **ENTER**. A menu will appear with two options: Key Sounds and Alarm Sound.
2. Highlight the box to the left of **KEY SOUNDS** and press **ENTER** to turn on (check) or turn off (uncheck) key sounds. You will be taken back to the main display.

Alarm Sounds

When an alarm is set and Alarm Sounds are turned on, you will hear a tone and see a pop-up window when the alarm is triggered. With an alarm set and Alarm Sounds turned off, you will see a pop-up window, but no tone will sound.

1. Press **MENU**, use the **UP** and **DOWN** keys to select **AUDIO SETUP**, and press **ENTER**. A menu will appear with two options: Key Sounds and Alarm Sound.
2. Highlight the box to the left of **ALARM SOUNDS** and press **ENTER** to turn on (check) or turn off (uncheck) alarm sounds. You will be taken back to the main display.

System Setup Menu

The System Setup menu contains the following features: Engine Data, Engine Alarms, Change Units, Fuel Setup, Bus Devices, Sonar Alarms, Eng/Tank Configuration, Reset Values, NMEA Information and System Information. Speed Range and Pressure Range are included on the System Setup menu on the Synchron, Engine Trim, Single Analog and Trim Tab pages.

Engine Data

The Engine Data feature allows you to select an engine (Port, Center or Starboard) to be the primary engine shown on pages that display engine data.

To modify Engine Data:

1. Press **MENU**, select **SYSTEM SETUP** and press **ENTER**.
2. Highlight **ENGINE DATA** and press **ENTER** to open the Select Engine menu with three options: Port, Center and Starboard.
3. Select the primary engine (Port, Center or Starboard) to be displayed and press **ENTER**. A confirmation message will appear. If, for example, you selected the Port engine the following message will appear: *Press Enter to change to Port Engine.*

4. Press **ENTER**. Pages that display engine data will now pull the data from the Port engine.

Engine Warnings

The Engine Warnings feature allows you to set an alarm for one or more engines. There are up to five options in the Engine Alarms menu, depending on the number of engines chose during Boat Setup. The options are All Engines, Port, Center, Starboard and Off. The default setting is All Engines. (If you have a single-engine configuration, the only options on the Engine Warning menu will be on and off.)

1. Press **MENU**, use the **UP** and **DOWN** keys to highlight **SYSTEM SETUP**, and press **ENTER**.
2. Highlight **ENGINE WARNINGS** and press **ENTER** to access the Engine Warnings menu.



Basic menu with System Setup highlighted (left). System Setup menu (right) with Engine Displayed selected.

3. Choose the desired option and press **ENTER**. You will be taken back to the main display. If you choose All Engines, each engine alarm will be set. If Port, Center or Starboard are selected, an alarm will be set for the individual engine you chose. (To turn off all engine warnings, highlight **OFF** and press **ENTER**. If you turn off engine alarms, no alarms will sound for any of the engines.)

Bus Devices

The Bus Devices feature allows you to manage devices on the NMEA 2000 network. After configuring a device, access Bus Devices to see the device listed with its new configuration.

1. Press **MENU**, use the **UP** and **DOWN** keys to select **SYSTEM SETUP** and press **ENTER**.

2. Highlight **BUS DEVICES** and press **ENTER**. The Bus Devices list will appear, showing all devices detected on the network.
3. Press **EXIT** repeatedly to get back to the main display.

Sonar Alarms

Sonar alarms allow you to set alarms that will alert you as water depth changes around your vessel. If the depth rises above (Deep Alarm) or falls below (Shallow Alarm) a depth threshold of your choosing, an alarm will sound.

To set the Shallow Alarm:

The shallow alarm will sound when your vessel enters water more shallow than the selected shallow alarm threshold.

1. Press **MENU**, use the **UP** and **DOWN** keys to select **SYSTEM SETUP** and press **ENTER**.
2. Highlight Sonar Alarms and press **ENTER** to open the Sonar Alarms menu with two options: Shallow and Deep.
3. Select **SHALLOW** and press **ENTER**. The Shallow menu will appear with two options: Off and Set Depth.
4. Select **SET DEPTH** and press **ENTER** to open the Set Depth menu. (Choose **OFF** to turn off the Shallow Alarm).
5. Use the **UP** and **DOWN** keys to set the alarm to the desired depth and press **ENTER**. Press **EXIT** to return to the Sonar Alarms menu.

To set the Deep Alarm:

The deep alarm will sound when your vessel enters water deeper than the selected deep alarm threshold.

1. Press **MENU**, use the **UP** and **DOWN** keys to select **SYSTEM SETUP** and press **ENTER**.
2. Highlight Sonar Alarms and press **ENTER** to open the Sonar Alarms menu with two options: Shallow and Deep.
3. Select **DEEP** and press **ENTER**. The Shallow menu will appear with two options: Off and Set Depth.
4. Select **SET DEPTH** and press **ENTER**. (Choose **OFF** to turn off the Deep Alarm).
5. Use the **UP** and **DOWN** keys to set the alarm to the desired depth, then press **EXIT** repeatedly to get back to the main display.



Sonar Alarms highlighted on System Setup menu (left). Sonar Alarms menu (center); Reset Values selected on System Setup menu (right).

Engine/Tank Configuration

The Engine/Tank configuration menu displays the number of engines and tanks on the vessel as well as tank capacity. You can reset your engine-tank configuration from the Engine/Tank Configuration menu.

To reset Eng/Tank configuration:

1. Press **MENU**, use the **UP** and **DOWN** keys to highlight **SYSTEM SETUP** and press **ENTER**.

2. Select **ENG/TANK CFG** and press **ENTER**. The Engine Tank information screen appears with the following message at the bottom of the page: *Press Enter to reset Cfg* (configuration).

3. Press **ENTER** and the following message will appear: *Press Enter to reset Eng/Tank Cfg*.

4. Press **ENTER**, which will open the Boat Setup menu. Press **ENTER**, then use the **UP** and **DOWN** keys to select an engine-tank configuration that matches the number of engines and tanks on your vessel.

The Boat Setup menu options are: 1 Eng/1 Tank, 1 Eng/2 Tank, 2 Eng/1 Tank, 2 Eng/2 Tanks, 3 Eng/1 Tank or 3 Eng/3 Tanks.

5. Select the desired option and press **ENTER**, which will open the Tank Size menu. The Tank Size menu will have up to three options (Port Tank, Cen Tank, Stbd Tank), depending on the engine tank configuration you selected during Boat Setup. (If you selected one tank during Boat Setup, you will not see any of these options. You will be taken directly to the Setting Tank Size Window.)

6. Select a tank and press **ENTER** to open the Setting Tank Size window.

7. Use the **UP** and **DOWN** keys to enter how many gallons the tank will hold and press **ENTER**. Repeat steps 6 and 7 for each remaining tank.

*NOTE: If you have one tank, press **ENTER** after you have input the capacity of the tank. Press **EXIT** repeatedly to get back to the main*

display.

8. After all tanks have been setup, press **EXIT** repeatedly to return to the main display.

Reset Values:

The Reset command allows you to reset all values back to factory default settings.

To reset values:

1. Press **MENU**, use the **UP** and **DOWN** keys to select **SYSTEM SETUP** and press **ENTER**.
2. Select **RESET VALUES** and press **ENTER**. The following message will appear: *Press Enter to Reset All Values.*
3. Press **ENTER** to reset values. You will be taken back to the main display.

NOTE: Resetting values is a hard reset. All SMIS 4" display settings will be set back to factory defaults. Resetting values, however, does not affect engine/tank configuration or the calibration and configuration settings of devices on the bus.

NMEA Info

The NMEA information screen displays information about your NMEA network, including address, instance, serial number and database version.

To access the NMEA Information screen:

1. Press **MENU**, use the **UP** and **DOWN** keys to select **SYSTEM SETUP** and press **ENTER**.
2. Highlight **NMEA INFO** and press **MENU**. Press Exit repeatedly to get back to the main display.

System Information

Access the system information screen to see what version of software you have in your SMIS 4" display..

To access the System Information screen:

1. Press **MENU**, use the **UP** and **DOWN** keys to select **SYSTEM SETUP** and press **MENU**.
2. Highlight **Sys INFO** and press **MENU**. The menu will time out and you will be taken back to the main display.

Speed Range

The Speed Range function is included in the System Setup menus of the following pages: Synchronizer, Engine Trim and Single Analog. The Speed Range feature can make on-screen gauges easier to read by allowing you to choose a range that will better fit your vessel's speed range. If, for example, your vessel's speed range is 0-40, the

unnecessary figures (41-120) will only crowd the gauge display, making it harder to read. Using the Speed Range feature allows you to eliminate unnecessary figures from the display, giving the gauge better resolution.

To set Speed Range:

1. With the single analog, dual analog, quad analog or synchronization page on the screen, press **MENU**, use the **UP** and **DOWN** keys to select **SYSTEM SETUP**, and press **MENU**.
2. Highlight **SPEED RANGE** and press **ENTER**, which will open the Speed range menu.
3. The Speed Range menu will appear with three options: 0-40, 0-80 and 0-120.
4. Select the desired range and press **ENTER**, which will take you back to the main display.

Pressure Ranges

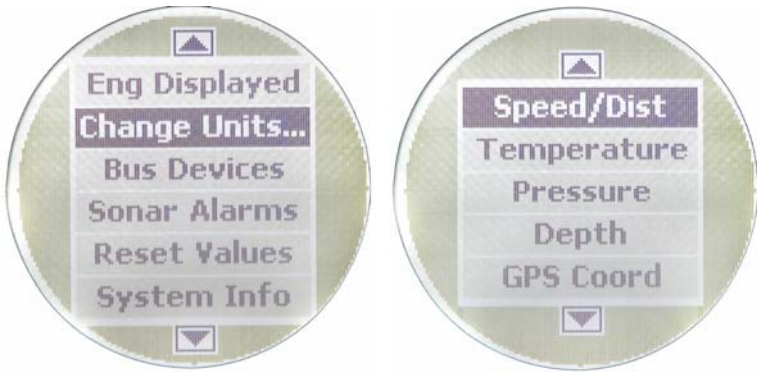
The Pressure Range screen is included in the System Setup menus of the following pages: Synchronizer, Engine Trim and Single Analog. Pressure Range can make on-screen gauges easier to read by allowing you to select a range that will better fit your vessel's pressure range. If, for example, your vessel's pressure range is 0-30 psi, the unnecessary figures (31-100 psi) will only crowd the gauge display, making it harder to read. Using the Pressure Range feature allows you to eliminate unnecessary figures from the display, giving the gauge better resolution.

To set Pressure Range:

1. With the single analog, dual analog, quad analog, synchronization page on the screen, press **MENU**, use the **UP** and **DOWN** keys to select **SYSTEM SETUP**, and press **MENU**.
2. Highlight **PRESS RANGES** (Pressure Ranges) and press **ENTER**, which will open the Pressure range menu with the following options: Eng Wtr Press (Engine Water Pressure), Eng Oil Press (Engine Oil Pressure), Fuel Pressure, Eng Bst Press (Engine Boost Pressure) and Trns Oil Press (Transmission Oil Pressure).
3. Select the desired pressure category and press **ENTER**. A menu will appear with these options: 0-15 psi, 0-30 psi, 0-60 psi, 0-80 psi, 0-100 psi.
4. Highlight the desired pressure range and press **ENTER**. You will be taken back to the main display.

Change Units

The **CHANGE UNITS** feature allows you to change the units of measure for the following categories: Speed/Distance, Temperature, Pressure, Depth, GPS Coordinates and Volume.



System Setup menu (left) with Change Units highlighted. The Change Units menu (right) with Speed/Distance selected.

To change Speed and Distance units:

Choosing Speed and Distance from the Change Units menu will allow you to set the unit of measure for speed and distance to Statute, Nautical or SI (Metric).

1. Press **MENU**, use the **UP** and **DOWN** keys to select **SYSTEM SETUP** and press **ENTER**.
2. Highlight **CHANGE UNITS** and press **ENTER**. Select **SPEED/DIST** and press **ENTER** to open the Speed and Distance menu.
3. Select the desired option — **STATUTE**, **NAUTICAL** or **SI (METRIC)** — and press **ENTER**. The unit of measure has been changed to the option you selected. You will be directed to the main display.

To change Temperature units:

Accessing Temperature from the Change Units menu will allow you to set the unit of measure for temperature to Fahrenheit or Celsius.

1. Press **MENU**, use the **UP** and **DOWN** keys to select **SYSTEM SETUP** and press **ENTER**. Highlight **CHANGE UNITS** and press **ENTER**.
2. Select **TEMPERATURE** and press **ENTER** to open the Temperature menu.
3. Highlight the desired option — **FAHRENHEIT** or **CELSIUS** — and press **ENTER**. The unit of measure has been changed to the option you selected. You will be directed to the main display.

To change Pressure units:

Selecting Pressure from the Change Units menu will allow you to set the unit of measure for pressure to Imperial/US or SI/Metric.

1. Press **MENU**, use the **UP** and **DOWN** keys to select **SYSTEM SETUP** and press **ENTER**.
2. Highlight **CHANGE UNITS** and press **ENTER**. Select **PRESSURE** and press **ENTER** to open the Pressure menu.
3. Choose the desired option — **IMPERIAL/US** or **SI/METRIC** — and press **ENTER**. The unit of measure has been changed to the option you selected. You will be directed to the main display.

To change Depth units:

Choosing Depth from the Change Units menu will allow you to set the unit of measure for depth to Feet, Fathoms or Meters.

1. Press **MENU**, use the **UP** and **DOWN** keys to select **SYSTEM SETUP** and press **ENTER**.
2. Highlight **CHANGE UNITS** and press **ENTER**. Select **DEPTH** and press **ENTER** to open the Depth menu.
3. Choose the desired option — **FEET**, **FATHOMS** or **METERS** — and press **ENTER**. The unit of measure has been changed to the option you selected. You will be directed to the main display.

To change GPS units:

Selecting GPS Coord from the Change Units menu will allow you to set the unit of measure for GPS coordinates to Deg/Min or Deg/Min/Sec.

1. Press **MENU**, use the **UP** and **DOWN** keys to select **SYSTEM SETUP** and press **ENTER**.
2. Highlight Change Units and press **ENTER**. Select **GPS COORD** and press **ENTER** to open the GPS Coordinates menu.
3. Select the desired option — **DEG/MIN** or **DEG/MIN/SEC** — and press **ENTER**. The unit of measure has been changed to the option you selected. You will be directed to the main display.

To change Volume units:

Choosing Volume from the Change Units menu will allow you to set the unit of measure for volume to US Gallons or Liters.

1. Press **MENU**, use the **UP** and **DOWN** keys to select **SYSTEM SETUP** and press **ENTER**.
2. Highlight **CHANGE UNITS** and press **ENTER**. Select **VOLUME** and press **ENTER** to open the Volume menu.

3. Select the desired option — **US GALLONS** or **LITERS** — and press **ENTER**. The unit of measure has been changed to the option you selected. You will be directed to the main display.

Fuel Setup

The following options may be accessed through the Fuel Setup menu: Refill Tank, Partial Fill, Economy Speed Source, Fuel Remaining Source, Reset Trip Fuel and Reset Seasonal Fuel.

Refill Tank

The Refill Tank command ensures the SMIS 4" display fuel reading is consistent with the actual amount of fuel in your tank(s). The Refill Tank command works with the Suzuki NMEA 2000 Engine Interface. The Refill Tank command is NOT used when the Fluid Level sensor is used to read the fuel level.

To refill tank:

1. Press **MENU**, use the **UP** and **DOWN** keys to select **SYSTEM SETUP** and press **ENTER**.
2. Highlight **FUEL SETUP** and press **ENTER**.
3. Select **REFILL TANK** and press **ENTER**. The select Tank menu will appear with up to three options (Port, Center and Starboard), depending on the engine-tank configuration you chose during Boat Setup. Select the tank you refilled and press **ENTER**. (If you have one tank, you will be taken directly to the recalibration window mentioned in step 4.)

NOTE: If a Suzuki NMEA 2000 Engine Interface is being used, a menu will appear giving you the option to calibrate fuel calculations. We will discuss calibration in Section 4: Configuration and Calibration.

4. A recalibration window will appear with two options: Yes and No. Select **No** and press **ENTER**. The following message will appear: *Press Enter after refilling the fuel tank.*

NOTE: You will only recalibrate the tank when greater accuracy is necessary or when the accuracy of default settings appears to be off. We will discuss calibration in detail in Section 4: EP Configuration and Calibration.

5. Press **ENTER**. You will be directed back to the main display.

Partial Fill

Partial Fill helps maintain the accuracy of fuel economy by allowing you to input the amount of fuel added to your tank(s). The Partial Fill command can be used with the Suzuki NMEA 2000 Engine Interface.

NOTE: When using the Partial Fill command, you will only be able to input into the gauge, an amount of fuel less or equal to the fuel used figure. The unit will not allow you to input a fuel amount greater than the fuel used figure.

To use Partial Fill:

1. Press **MENU**, use the **UP** and **DOWN** keys to select **SYSTEM SETUP** and press **ENTER**. Highlight **FUEL SETUP** and press **ENTER**.
2. Select **PARTIAL FILL** and press **ENTER**. The Select Tank menu will appear with up to three options (Port, Center and Starboard), depending on the engine-tank configuration you selected during Boat Setup. (If you have one tank, you will be taken directly to the Adding Fuel window.)
3. Select the desired tank and press **ENTER**. The Adding Fuel window will appear.

NOTE: When using the Partial Fill command, you will only be able to input into the gauge, an amount of fuel less or equal to the fuel used figure. The unit will not allow you to enter a fuel amount greater than the fuel used figure.

4. Use the **UP** and **DOWN** keys to input the amount of fuel added to the tank and press **ENTER**. You will be taken back to the main display.

Economy Speed Source

The Economy Speed menu allows you to choose what speed source the SMIS 4" display will use to calculate Fuel Economy. A NMEA 2000 GPS module measures ground speed, while a NMEA 2000 paddlewheel measures water speed.

To change Economy Speed source:

1. Press **MENU**, use the **UP** and **DOWN** keys to select **SYSTEM SETUP** and press **ENTER**. Select **FUEL SETUP** and press **ENTER**.
2. Highlight **ECO SPEED SRC** and press **ENTER** to open the Economy Speed menu. The menu has two options: Water Speed (Paddlewheel) and Ground Speed (GPS).
3. Select the desired speed source and press **ENTER**. You will be taken back to the main display.

Fuel Remaining Source

The Fuel Remaining Source is set, by default, to fluid level for the unit to correctly display fuel level information.. It can also be set to Fuel Flow if desired.

NOTE: If you want to use the NMEA 2000 Suzuki Engine Interface to measure fuel remaining, select Engine/FFlow from the Fuel

To change Fuel Remaining Source:

1. Press **MENU**, use the **UP** and **DOWN** keys to select **SYSTEM SETUP** and press **ENTER**.
2. Highlight **FUEL SETUP** and press **ENTER**.
3. Select **FUEL REM SRC** (Fuel Remaining Source) and press **ENTER**.
4. Highlight the device you want to use to measure remaining fuel — **ENG/FFLOW** (Engine Fuel Flow) or **FLUID LEV SNSR** (Fluid Level Sensor) — and press **ENTER**. You will be taken back to the main display.

Reset Trip Fuel

By using the Reset Trip command, you can reset to zero the running total of fuel used on a particular trip.

To reset trip fuel:

1. Press **MENU**, use the **UP** and **DOWN** keys to select **SYSTEM SETUP** and press **ENTER**. Select **FUEL SETUP** and press **ENTER**.
2. Highlight **RST TRIP FUEL** and press **ENTER**. The Select Engine menu will appear with up to four options (Port, Center, Starboard and All Engines), depending on the engine-tank configuration you selected during Boat Setup. (If you have one tank, the *Press Enter to reset Trip Fuel* message will appear.)
3. Select the desired option and press **ENTER**. The following message will appear: *Press Enter to reset Trip Fuel*.
4. Press **ENTER**, which will reset the trip fuel and take you back to the main display.

Reset Seasonal

The SMIS 4" display can keep a running total of the amount of fuel used during a season. The Resetting Seasonal fuel command resets the seasonal fuel used figure to zero.

To reset seasonal fuel:

1. Press **MENU**, use the **UP** and **DOWN** keys to select **SYSTEM SETUP** and press **ENTER**.
2. Highlight **FUEL SETUP** and press **ENTER**.
3. Select **RST SEASONAL** (Reset Seasonal) and press **ENTER**. The Select Engine menu will appear with up to four options (Port, Center, Starboard and All Engines), depending on the engine-tank configuration you chose during Boat Setup. (If you have one engine, the reset seasonal fuel message will appear.)
4. Select the desired option and press **ENTER**. The following message will appear: *Press Enter to reset Seasonal Fuel*.

5. Press **ENTER** to reset seasonal fuel. You will be taken back to the main display.

Customizing Pages

The customizing pages feature allows you to choose what data will be displayed on selected pages. Pages that can be customized include: Single Analog, Dual Analog, Quad Analog, Single Digital, Dual Digital, Quad Digital, Fuel Manager and Trim Tab pages. The Engine Trim, Engine Diagnostic, GPS Position and Synchronizer pages can not be customized.

NOTE: Before a page can be customized it must be added to the page screen rotation. (See the Adding Pages segment on page 17.) Once it is in the rotation, scroll it onto the main display to access its customize menu.



Basic menu with Customize highlighted.

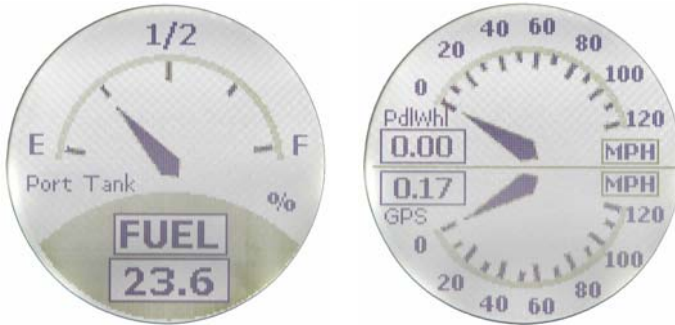
Single Analog

The Single Analog page may be customized to display these data categories: Alt Voltage, Battery Voltage, Engine Temp, Engine Water Pressure, Engine Oil Pressure, Fuel Pressure, Engine Boost Pressure, Transmission Oil Pressure, Atmospheric Pressure, Temperature, Fluid Level, Water Speed (Paddlewheel), Ground Speed (GPS), and Tachometer.

To customize Single Analog page:

1. Make sure the Single Analog page has been added to the page screen rotation.
2. Use the **ENTER** and **EXIT** keys to scroll the Single Analog page onto the main display.
3. Press **MENU**, use the **UP** and **DOWN** keys to select **CUSTOMIZE** and press **ENTER**. The data categories menu will appear.
4. Select the data category you want to display and press **ENTER**. You will be taken back to the main display where the Single Analog page

will be shown with the data you selected.



Single Analog page (left) with Dual Analog page (right).

Dual Analog

The Dual Analog page consists of two analog gauges and may be customized to show these data categories: Alt Voltage, Battery Voltage, Engine Temp, Engine Water Pressure, Engine Oil Pressure, Fuel Pressure, Engine Boost Pressure, Transmission Oil Pressure, Atmospheric Pressure, Temperature, Fluid Level, Water Speed (Paddlewheel), Ground Speed (GPS), and Tachometer.

To customize Dual Analog page:

1. Make sure the Dual Analog page has been added to the page screen rotation.
2. Use the **ENTER** and **EXIT** keys to scroll the Dual Analog page onto the main display.
3. Press **MENU**, use the **UP** and **DOWN** keys to select **CUSTOMIZE** and press **ENTER**. A menu will appear with two options: Top Gauge and Bottom Gauge.
4. Select the desired gauge and press **ENTER**. The data categories list will appear.
5. Highlight the data category you want to display and press **ENTER**. Repeat steps 1-5 for the other half of the page (Top Gauge or Bottom Gauge).
6. Press **EXIT** | **EXIT** to return to the main display where the Dual Analog page will be shown with the data categories you selected.

Quad Analog

The Quad Analog page is divided into four analog gauges, each capable of displaying these data categories: Alternator Voltage, Battery Voltage, Engine Temperature, Engine Water Pressure, Engine Oil Pressure, Fuel Pressure, Engine Boost Pressure, Transmission Oil Pressure, Atmospheric Pressure, Temperature, Fluid Level, Water Speed (Paddlewheel), Ground Speed (GPS) and Tachometer.

To customize Quad Analog page:

1. Make sure the Quad Analog page has been added to the page screen rotation.
2. Use the **ENTER** and **EXIT** keys to scroll the Quad Analog page onto the main display.
3. Press **MENU**, select **CUSTOMIZE** and press **ENTER**. A menu will appear with four options: Top Left, Top Right, Bottom Left and Bottom Right.
4. Select the desired option and press **ENTER**. The data categories list will appear.
5. Highlight the data you want to display and press **ENTER**. Repeat steps 1-5 for each gauge (Top Left, Top Right, Bottom Left and Bottom Right).
6. Press **EXIT | EXIT** to get back to the Quad Analog page, where the data you selected will be displayed.

NOTE: If a page is customized to show information from a device that is working improperly or is not connected to the NMEA 2000 network, the data boxes on the gauge will flash. This indicates the device is not sending data to the Bus. This could occur for a variety of reasons, depending on the device type.



Quad Analog page (left) with Single Digital page (right).

Single Digital

The single digital page can display these data categories: Alternator Voltage, Battery Voltage, Engine Temperature, Engine Water Pressure, Engine Oil Pressure, Fuel Pressure, Engine Boost Pressure, Transmission Oil Pressure, Atmospheric Pressure, Temperature, Depth, Engine Load, Total Engine Hours, Fuel Flow, Fuel Economy, Fuel Remaining, Fuel Used, Fuel Range, Trip Fuel Use, Seasonal Fuel, Water Speed (Paddle Wheel Speed), Ground Speed (GPS) and Tachometer.

To customize Single Digital page:

1. Make sure the Single Digital page has been added to the page screen

rotation.

2. Use the **ENTER** and **EXIT** keys to scroll the Single Digital page onto the main display.
3. Press **MENU**, select **CUSTOMIZE** and press **ENTER**. The data categories list will appear.
4. Highlight the data you want to display and press **ENTER**. You will be taken back to the main display where the single digital page will be displayed with the data you selected.

Dual Digital

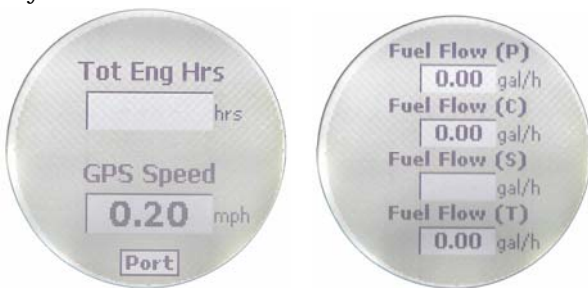
The Dual Digital page has two digital data boxes stacked one on top of the other. The digital data boxes can display: Alternator Voltage, Battery Voltage, Engine Temperature, Engine Water Pressure, Engine Oil Pressure, Fuel Pressure, Engine Boost Pressure, Transmission Oil Pressure, Atmospheric Pressure, Temperature, Depth, Engine Load, Total Engine Hours, Fuel Flow, Fuel Economy, Fuel Remaining, Fuel Used, Fuel Range, Trip Fuel Use, Seasonal Fuel, Water Speed (Paddle Wheel Speed), Ground Speed (GPS) and Tachometer.

To customize the Dual Digital page:

1. Make sure the Dual Digital page has been added to the page screen rotation.
2. Use the **ENTER** and **EXIT** keys to scroll the Dual Digital page onto the main display.
3. Press **MENU**, select **CUSTOMIZE** and press **ENTER**. A menu will appear with two options: Top Data and Bottom Data.
4. Highlight the desired option and press **ENTER**. The data categories list will appear.
5. Select the data you want to display and press **ENTER**. One of two things will happen, depending on the data category you selected.
 1. If you chose Atmospheric Pressure, Temperature, Depth, Water Speed or Ground Speed, you will be taken back to the Top Data-Bottom Data menu. Repeat Steps 4-5 for the other uncustomized data box.
 2. If you selected Alternator Voltage, Battery Voltage, Engine Temp, Engine Water Pressure, Engine Oil Pressure, Fuel Pressure, Engine Boost Pressure, Transmission Oil Pressure, Engine Load, Total Engine Hours, Fuel Flow, Fuel Economy, Fuel Remaining, Fuel Used, Fuel Range, Trip Fuel Used, Seasonal Fuel or Tachometer, you will be taken to the Select Engine menu where there will be up to three options: Port, Center and Starboard. The data category you selected will retrieve data from the engine you choose. Select the desired engine and press **ENTER**. You will be

taken back to the Top Data-Bottom Data menu. Highlight the other uncustomized data box and repeat steps 4-5.

6. When both digital data boxes are customized, press **EXIT|EXIT** to return to the main display, where the dual digital page will be shown with the data you chose.



Dual Digital page (left) with Quad Digital page (right).

Quad Digital

The Quad Digital page has four digital data boxes, stacked one on top of the other. The digital data boxes can display: Alternator Voltage, Battery Voltage, Engine Temperature, Engine Water Pressure, Engine Oil Pressure, Fuel Pressure, Engine Boost Pressure, Transmission Oil Pressure, Atmospheric Pressure, Temperature, Depth, Engine Load, Total Engine Hours, Fuel Flow, Fuel Economy, Fuel Remaining, Fuel Used, Fuel Range, Trip Fuel Use, Seasonal Fuel, Water Speed (Paddle Wheel Speed), Ground Speed (GPS) and Tachometer.

To customize Quad Digital page:

1. Make sure the Quad Digital page has been added to the page display.
2. Use the **ENTER** and **EXIT** keys to scroll the Quad Digital page onto the main display.
3. Press **MENU**, select **CUSTOMIZE** and press **ENTER**. The Data Box menu will appear with four options: Data Box 1, Data Box 2, Data Box 3 and Data Box 4.
4. Highlight the desired data box and press **ENTER**. A list of data categories will appear.
5. Select the data you want to display and press **ENTER**. One of two things will happen, depending on the data category you selected.
 1. If you chose Atmospheric Pressure, Temperature, Depth, Water Speed or Ground Speed, you will be taken back to the Data Box menu. Repeat Steps 4-5 for the other uncustomized digital data boxes.
 2. If you selected Alternator Voltage, Battery Voltage, Engine Temp,

Engine Water Pressure, Engine Oil Pressure, Fuel Pressure, Engine Boost Pressure, Transmission Oil Pressure, Engine Load, Total Engine Hours, Fuel Flow, Fuel Economy, Fuel Remaining, Fuel Used, Fuel Range, Trip Fuel Used, Seasonal Fuel or Tachometer, you will be taken to the Select Engine menu which will have up to three options: Port, Center and Starboard. The data you selected will originate from the engine you choose. Select the desired engine and press **ENTER**. You will be taken back to the Data Box menu. Highlight the other uncustomized digital data boxes and repeat steps 4-5.

6. When all Data boxes have been customized, press **EXIT|EXIT** to return to the main display, where the Quad Digital page will be shown with the data you selected.

Trim Tabs

The Trim Tab page can display Trim Tabs position in percentages and degrees.

Customize Trim Tabs:

1. Make sure the Trim Tabs page has been added to the page screen rotation.
2. Use the **ENTER** and **EXIT** keys to scroll the Trim Tabs page onto the main display.
3. Press **MENU**, select **CUSTOMIZE** and press **ENTER**. The Trim Tabs Customize menu will appear with two options: Percentage or Degrees.
4. Select the desired option and press **ENTER**. You will be taken back to the main display, where trim tab information will be displayed in the unit of measure you chose.



Trim Tabs page (left), GPS Module page (center) and Fuel Manager Page (right).

Fuel Manager

The Fuel Manager page has three digital data boxes stacked one on top of the other. Each digital data box can display: Fuel Flow, Fuel Economy, Fuel Remaining, Fuel Used, Fuel Range, Trip Fuel Used, Seasonal Fuel, Water Speed (Paddle Wheel Speed) and Ground Speed

(GPS).

To customize the Fuel Manager Page:

1. Make sure the Fuel Manager page has been added to the page screen rotation.
2. Use the **ENTER** and **EXIT** keys to scroll the Fuel Manager page onto the main display.
3. Press **MENU**, select **CUSTOMIZE** and press **ENTER**. The data location menu will appear with three options: Top Data, Center Data and Bottom Data.
4. Highlight the desired data location and press **ENTER**. A list of data categories will appear.
5. Select the desired data category and press **ENTER**. One of two things will happen, depending on the data category you selected.
 1. If you chose Water Speed or Ground Speed, you will be taken back to the Data Location menu. Repeat Steps 4-5 for the other data locations you want to customize.
 2. If you chose Fuel Flow, Fuel Economy, Fuel Remaining, Fuel Used, Fuel Range, Trip Fuel Used or Seasonal Fuel, you will be taken to the Select Engine menu which will have up to three options: Port, Center and Starboard. Select the engine you would like to use as the source for the data category you selected and press **ENTER**. You will be taken back to the Data Location menu.
6. Repeat Steps 4 and 5 for each of the other data locations you want to customize. When all have been customized, press **EXIT | EXIT** to get back to the Fuel Manager page.

Notes

Section 4: Electronic Sensor Configuration & Calibration

To configure items connected to the network, press **MENU**, select **SYSTEM SETUP** and press **ENTER**. Highlight **BUS DEVICES** and press **ENTER** to open the Bus Devices list. A list of devices on the network will appear. Bus Devices works as the device manager for the bus, allowing you to configure and unconfigure devices and set and reset critical values such as alarms and calibration.

When you configure or reconfigure a sensor, you are assigning or reassigning its configuration name in the SMIS 4" display to a different sensor location on the boat.

NOTE: The Temperature sensor and Fluid Level are the only sensors that can be configured.



Bus Devices highlighted in the System Setup menu (left). Searching Bus Devices window (center) with Bus Devices list (right).

Temperature Configuration

The Temperature sensor has three configuration options: Inside, Outside and Water. An unconfigured temperature sensor will appear on the bus devices list as UnCfg Temp.

To configure Temp Sensor:

1. Press **MENU**, use the **UP** and **DOWN** keys to select **SYSTEM SETUP** and press **ENTER**.
2. Highlight **BUS DEVICES** and press **ENTER**. The Bus Devices list will appear, showing all devices detected on the network.
3. Select an unconfigured temp sensor (**UNCFG TEMP**) and press **ENTER**. The following message will appear: *Press Enter to Configure Temp Sensor*.
4. Press **ENTER**, which will open the Sel Temp menu with three options: Water Temp, Outside Temp and Inside Temp.
5. Highlight the desired option and press **ENTER**. The temp is now

configured. You will be directed to the Bus Devices list. Press **EXIT** repeatedly to get back to the main display.

To unconfigure an temp sensor:

1. Press **MENU**, use the **UP** and **DOWN** keys to select **SYSTEM SETUP** and press **ENTER**.
2. Highlight **BUS DEVICES** and press **ENTER**. The Bus Devices list will appear, showing all devices detected on the network.
3. Choose the temp sensor you want to unconfigure and press **ENTER**. Select **UNCONFIGURE** from the temp configuration menu and press **ENTER**. The following message will appear: *Press Menu to UnConfig Device Name*.
4. Press **ENTER** to unconfigure the sensor and be directed back to the Bus Devices list where the temp now will be listed as UnCfg Temp.

To reconfigure an temp sensor:

To reconfigure a sensor, there must be a configuration name available (Water, Outside or Inside). If all three temp sensors have been configured, you first will have to unconfigure a temp sensor to make its name available for reconfiguration. If you try to reconfigure a sensor when the desired configuration name (Water, Outside and Inside) is in use, a *Name Already Selected* message will appear.

If all three temps are configured, which means there is no name configuration available, follow the first set of instructions. If the desired configuration name is available, follow the second set of instructions.

The steps below will show you how to switch the configuration of a water temp to an outside temp.

If all temps configured (Configuration name unavailable):

1. Press **MENU**, use the **UP** and **DOWN** keys to select **SYSTEM SETUP** and press **ENTER**.
2. Highlight **BUS DEVICES** and press **ENTER**. Select **OUT: T** (Outside Temp) and press **ENTER** to open the temp configuration menu.
3. Select **UNCONFIGURE** and press **ENTER**. The following message will pop up: *Press Enter to UnConfig Device Name*.
4. Press **ENTER** to unconfigure the sensor and be taken back to the Bus Devices list. The Outside temp is now unconfigured and will be displayed as UnCfg Temp. Its configuration name (Outside) is now available, so you will be able to use it to reconfigure the Water temp sensor.

5. Highlight **WTR: T** and press **ENTER**, which will open the temp

configuration menu. Select **RECONFIGURE** and press **ENTER**. That will direct you to the Temp Selection menu, which will have three options: Water, Outside and Inside.

6. Select **OUTSIDE** and press **ENTER**. You will be taken back to the Bus Devices list. The temp you just reconfigured (formerly water temp) will now be displayed as Out: T.

7. To configure the unconfigured Temp (formerly Outside temp), highlight **UNCFG TEMP** from the Bus Devices list and press **ENTER** to open the Temp Selection menu, which will have three options: Water, Outside and Inside. Highlight **WATER** and press **ENTER**. You will be taken back to the Bus Devices list, where the temp you just configured will be displayed as WTR: T.

If desired configuration name available:

1. Press **MENU**, use the **UP** and **DOWN** keys to select **SYSTEM SETUP** and press **ENTER**.

2. Highlight **BUS DEVICES** and press **ENTER**. Select **WTR: T** and press **ENTER** to open the configuration options menu.

3. Select **RECONFIGURE** and press **ENTER** to open the Temp Selection menu, which will have three options: Water, Outside and Inside.

4. Highlight **OUTSIDE** and press **ENTER**. You will be taken back to the Bus Devices list where the temp will now be shown as Out T.

Fluid Level Configuration

The SMIS 4" display will support up to three tanks for each Fluid Level type which includes: Fuel, Fresh Water, Oil, Black Water, Waste Water (Gray Water) and Live Well.

On the Bus Devices list, the fuel tanks will be displayed as Fuel Tank (P) — Portside, Fuel Tank (C) — Center, and Fuel Tank (S) — Starboard. If you chose a one-tank configuration in Boat Setup, the tank will be listed as Fuel Tank.

Like a fuel tank, the Oil Tank will also be flanked by its engine location — Oil Tank (P), Oil Tank (C) or Oil Tank (S).

When setting fluid level configuration for the other fluid types you will be given the opportunity to assign the tank a number in case you have more than one tank of that fluid type. The tanks will be flanked by a tank number your choosing. By default, the tank number is set to 1.

The other fluid types will be displayed as BlkWtr Tnk (1, 2 or 3), FrshWtr Tnk (1, 2 or 3), LWell Tnk (1, 2 or 3) and WsteWtr Tnk (1, 2 or 3). If the fluid level has not been configured, it will be listed as Unfcg F Lev on the bus devices list.

NOTE: The Fuel Remaining Source must be set to fluid level for the unit to correctly display fuel level information. It is set to Engine/Fuel Flow by default.

Fluid Level menu

The Fluid Level menu contains the following features: Configure, Unconfigure, Reconfigure, Level Warning, Calibrate, Reset Calibration and Reset Values. Calibration and Reset Calibration will be addressed in the calibration portion of this section.

NOTE: If you configure your fluid level for fuel, you will NOT be able to get a fuel range reading. Fuel Range will NOT be calculated with a fluid level sensor. It will only be calculated with an engine interface.

To configure Fluid Level sensor for Fuel:

1. Make sure the Fuel Remaining Source has been set to Fluid Level. Press **MENU**, use the **UP** and **DOWN** keys to select **SYSTEM SETUP** and press **ENTER**.
2. Highlight **BUS DEVICES** and press **ENTER** to bring up the Bus Devices list.
3. Select **UNFCG F LEV** and press **ENTER**. The following message will appear: *Press Enter to configure Fluid Lev Snsr.*
4. Press **ENTER** and the Fluid Level configuration menu will appear.
5. Choose **FUEL** and press **ENTER**, which will open the Select Tank menu with up to three options: Port Tank, Center Tank and Starboard Tank. The number of tank options depends on the engine-tank configuration you chose during Boat Setup.
6. Select the tank connected to the fluid level you are configuring and press **ENTER**. You will be taken back to the Bus Devices list, where the tank will be displayed as Fuel Tank (P), Fuel Tank (C) or Fuel Tank (S). Press **EXIT** repeatedly to return to the main display.

To configure for Fresh Water:

1. Press **MENU**, use the **UP** and **DOWN** keys to select **SYSTEM SETUP** and press **ENTER**.
2. Highlight **BUS DEVICES** and press **ENTER**. The Bus Devices list will appear.
3. Select **UNFCG F LEV** and press **ENTER**. The following message will appear: *Press Enter to configure Fluid Lev Snsr.* Press **ENTER** and the Fluid Level configuration menu will appear.
4. Choose **FRESH WATER** and press **ENTER**. The Tank Number window will appear.

5. Use the **UP** and **DOWN** keys to input the number you want to assign the tank and press **ENTER**. The Setting Tank Size window will appear on the screen.

6. Use the **UP** and **DOWN** keys to input the size of the tank and press **ENTER**. You will be taken back to the Bus Devices list, where the tank will be displayed as FrshWtr Tnk (1, 2 or 3).

To configure for Waste Water (Gray Water):

1. Press **MENU**, use the **UP** and **DOWN** keys to select **SYSTEM SETUP** and press **ENTER**.

2. Highlight **BUS DEVICES** and press **ENTER**. The Bus Devices list will appear.

3. Select **UNFCG F LEV** and press **ENTER**. The following message will appear: *Press Enter to configure Fluid Lev Snsr*. Press **ENTER** and the Fluid Level configuration menu will appear.

4. Choose **WASTE WATER** and press **ENTER**. The Tank Number window will appear.

5. Use the **UP** and **DOWN** keys to input the number you want to assign the tank and press **ENTER**. The Setting Tank Size window will appear on the screen.

6. Use the **UP** and **DOWN** keys to input the size of the tank and press **ENTER**. You will be taken back to the Bus Devices list, where the tank will be displayed as WstWtr Tnk (1, 2 or 3). Press **EXIT** repeatedly to get back to the main display.

To configure for Live Well:

1. Press **MENU**, use the **UP** and **DOWN** keys to select **SYSTEM SETUP** and press **ENTER**.

2. Highlight **BUS DEVICES** and press **ENTER**. The Bus Devices list will appear.

3. Select **UNFCG F LEV** and press **ENTER**. The following message will appear: *Press Enter to configure Fluid Lev Snsr*. Press **ENTER** and the Fluid Level configuration menu will appear.

4. Choose **LIVE WELL** and press **ENTER**. The Tank Number window will appear.

5. Use the **UP** and **DOWN** keys to input the number you want to assign the tank and press **ENTER**. The Setting Tank Size window will appear on the screen.

6. Use the **UP** and **DOWN** keys to input the size of the tank and press **ENTER**. You will be taken back to the Bus Devices list, where the tank will be displayed as LWell Tnk (1, 2 or 3).

To configure for Oil:

1. Press **MENU**, use the **UP** and **DOWN** keys to select **SYSTEM SETUP** and press **ENTER**.
2. Highlight **BUS DEVICES** and press **ENTER**. The Bus Devices list will appear.
3. Select **UNFCG F LEV** and press **ENTER**. The following message will appear: *Press Enter to configure Fluid Lev Snsr*.
4. Press **ENTER** and the Fluid Level configuration menu will appear.
5. Choose **OIL** and press **ENTER**, which will open the Select Tank menu with up to three options: Port Tank, Cen Tank and Stbd Tank. The number of tank options depends on the number of tanks you chose during Boat Setup.
6. Select the desired tank and press **ENTER**.
7. The Tank Size window will appear. Use the **UP** and **DOWN** keys to input the size of the tank and press **ENTER**. You will be taken back to the Bus Devices list, where the tank will be displayed as Oil Tank (P), Oil Tank (C) or Oil Tank (S).

To configure for Black Water:

1. Press **MENU**, use the **UP** and **DOWN** keys to select **SYSTEM SETUP** and press **ENTER**.
2. Highlight **BUS DEVICES** and press **ENTER**. The Bus Devices list will appear.
3. Select **UNFCG F LEV** and press **ENTER**. The following message will appear: *Press Enter to configure Fluid Lev Snsr*. Press **ENTER** and the Fluid Level configuration menu will appear.
4. Choose **BLACK WATER** and press **ENTER**. The Tank Number window will appear.
5. Use the **UP** and **DOWN** keys to input the number you want to assign to the tank and press **ENTER**. The Setting Tank Size window will appear on the screen.
6. Use the **UP** and **DOWN** keys to input the size of the tank and press **ENTER**. You will be taken back to the Bus Devices list, where the tank will be displayed as BlkWtr Tnk (1, 2 or 3).

To unconfigure Fluid Level:

1. Press **MENU**, use the **UP** and **DOWN** keys to select **SYSTEM SETUP** and press **ENTER**.
2. Highlight **BUS DEVICES** and press **ENTER**, which will open the Bus Devices list.
3. Choose a configured Fluid Level from the Bus Devices list and press **ENTER**. The Fluid Level will appear with the following options: Level Warning, Unconfigure, Reconfigure, Calibrate, Reset Cal and Reset

Values.

3. Highlight **UNCONFIGURE** and press **ENTER**, which will launch the following message: *Press Enter to Unconfig Device name.*
4. Press **ENTER** and you will be taken back to the Bus Devices list where the fluid level you unconfigured will be displayed as UnCfg F Level.

To reconfigure Fluid Level:

1. Press **MENU**, use the **UP** and **DOWN** keys to select **SYSTEM SETUP** and press **ENTER**.
2. Highlight **BUS DEVICES** and press **ENTER**. The Bus Devices list will appear.
3. Select the Fluid Level you want to configure and press **ENTER**.
4. The Fluid Level menu will appear with the following options: Level Warning, Unconfigure, Reconfigure, Calibrate, Reset Cal and Reset Values.
5. Choose **RECONFIGURE** and press **ENTER**. Use the **UP** and **DOWN** keys to input the tank number you want to assign the fluid level and press **ENTER**. The Setting Tank Size window will appear on the screen.
6. Use the **UP** and **DOWN** keys to input the size of the tank and press **ENTER**. You will be taken back to the Bus Devices list, where the fluid level will be displayed with its new configuration.

Level Warning

A Level Warning alerts you when the fluid level rises above or falls below a preset percentage of tank capacity. The Level Warning menu has two options: Low Level and High Level. A low level warning is used for fluid types like fuel and freshwater, whereas a high level warning is best suited for black water and Waste Water (Gray Water).

To set a Level Warning:

1. Press **MENU**, use the **UP** and **DOWN** keys to **SYSTEM SETUP** and press **MENU**.
2. Highlight **BUS DEVICES** and press **ENTER**. The Bus Devices list will appear.
3. Select the desired fluid level and press **ENTER**.
4. Choose **LEVEL WRNG** and press **ENTER**. The Level Warning menu will appear with two options: Low Level and High Level.
5. Select the desired alarm level and press **ENTER**. The Set Level Percentage window will appear. By default, it will be set to Off. (You can turn off a level warning by setting the Set Level percentage window to Off.)
6. Use the **UP** and **DOWN** keys to set the alarm to the desired percentage of tank capacity. Press **ENTER**. You will be taken back to the

Bus Devices list. Press **EXIT** repeatedly to get back to the main display.

*NOTE: If you configure a tank for fuel, you should choose a **Low LEVEL** warning, which will warn you when the fuel level drops below a preset percentage of the tank's capacity. A Low Level alarm will also work best for Fresh Water and Oil configurations. When a tank is configured for Black Water or Waste Water, the Level Warning should be set to the High Level. If, for example, you set the High Level warning to 3 quarters of a tank, you would be alerted before the tank's capacity had been exceeded, allowing you to empty the tanks before they fill up.*

Reset Values

Accessing the Reset Values command from the Fluid Level menu, allows you to reset the values of an individual fluid level without affecting the settings of any other sensor.

To Reset Values:

1. Press **MENU**, use the **UP** and **DOWN** keys to select **SYSTEM SETUP** and press **ENTER**.
2. Highlight **BUS DEVICES** and press **ENTER**. The Bus Devices list will appear.
3. Select the fluid level you want to reset and press **ENTER**. The Fluid Level menu will appear with the following options: Level Warning, Unconfigure, Reconfigure, Calibrate, Reset Cal and Reset Values.
4. Choose **RESET VALUES** and press **ENTER**. The following message will appear: *Press Enter to Reset Device Values.*
5. Press **ENTER** to reset the fluid level's settings back to factory defaults.

NOTE: If you reset values from a fluid level menu, you will only restore default settings for that particular fluid level sensor. Executing the Reset Values command will also clear configuration and calibration settings.

Calibrating Electronic Sensors

The default calibration for the Fluid Level is just as accurate as standard fluid level gauges. If, however, the tank has an irregular shape or greater accuracy is needed, calibration is recommended.

Calibrating Fluid Level

The Fluid Level has three calibration options: 2 point, 3 point and 5 point.

2-Point Calibration

A 2-point calibration is best suited for rectangular or square-shaped tanks, where the capacity of the top half of the tank matches the capacity in the lower half of the tank. In a two-point calibration, you will set two points, one each for empty and full levels. You can begin calibration at either of the two points, but we recommend starting with an empty tank. You will fill the tank to complete calibration.

To execute 2-Point calibration:

1. Before following the steps below, make sure your fuel tank is empty.
2. Press **MENU**, use the **UP** and **DOWN** keys to select **SYSTEM SETUP** and press **ENTER**.
3. Highlight **BUS DEVICES** and press **ENTER**. Choose the fluid level you want to calibrate and press **ENTER**.
4. Select **CALIBRATE** and press **ENTER**. The Number of Points menu will appear with three options: 2, 3 and 5. Select **2**, for two-point calibration, and press **ENTER**.
5. The Levels menu will appear with two choices: Empty Level and Full Level. Choose **EMPTY LEVEL** and press **ENTER**.
6. The following message will appear: *Set Tank to Empty Level Press Enter*. Press **ENTER**. You will be taken back to the Levels menu.
7. Fill up your tank.
8. Select **FULL LEVEL** and press **ENTER**. The following message will appear: *Set Tank to Full Level Press Enter*.
9. Press **ENTER**. Press **EXIT** repeatedly to return to the main display.

3-Point Calibration

3-point calibration is designed for tanks that vary in shape from the top to the bottom. You can begin calibration at any point in the 3-point process, but we recommend starting calibration with an empty tank. In a 3-point calibration, you will set three points, one each for empty, half and full levels.

To execute 3-Point calibration:

1. Before following the steps below, make sure your fuel tank is empty.
2. Press **MENU**, use the **UP** and **DOWN** keys to select **SYSTEM SETUP** and press **ENTER**.
3. Highlight the fluid level you want to calibrate and press **ENTER**.
4. Select **CALIBRATE** and press **ENTER**. The Number of Points menu will appear with three options: 2, 3 and 5. Select **3**, for three-point calibration, and press **ENTER**.
5. Highlight **EMPTY LEVEL** and press **ENTER**. The following message will appear: *Set Tank to Empty Level Press Enter*.

6. Press **ENTER**. You will be taken back to the Levels menu.
7. Add half a tank of fuel. (If you had a 100 gallon tank, you would add 50 gallons.)
8. Select **HALF LEVEL** and press **ENTER**. The following message will appear: *Set Tank to Half Level Press Enter*.
9. Press **ENTER**. You will be taken back to the Levels menu.
10. Fill up your tank.
11. Highlight **FULL LEVEL** and press **ENTER**. The following message will appear: *Set Tank to Full Level Press Enter*.
12. Press **ENTER**. You will be taken back to the Levels menu. Press **EXIT** repeatedly to get back to the main display.

5-Point Calibration

5-point calibration is best suited tanks that vary greatly in shape from top to bottom. You can begin calibration at any point in the 5-point calibration process. We recommend starting calibration with an empty tank. In a five-point calibration you will set five points: Empty Level, 1 Qtr Level, Half Level, 3 Qtr Level and Full Level.

To execute 5-Point calibration:

1. Before following the steps below, make sure your fuel tank is empty. Press **MENU**, use the up and down keys to select **SYSTEM SETUP** and press **ENTER**.
2. Highlight the fluid level you want to calibrate and press **ENTER**. Select **CALIBRATE** and press **ENTER**. The Number of Points menu will appear with three options: 2, 3 and 5. Select **5**, for three-point calibration, and press **ENTER**.
3. The Levels menu will appear with five options: Empty Level, 1 Qtr Level, Half Level, 3 Qtr Level and Full level. Select **EMPTY LEVEL** and press **ENTER**. The following message will appear: *Set Tank to Empty Level Press Enter*.
4. Press **ENTER**. You will be taken back to the Levels menu. Add 1-quarter tank of fuel. (If you have a 100 gallon tank, add 25 gallons of fuel.)
5. Highlight **1 QTR LEVEL** and press **ENTER**. The following message will appear: *Set Tank to 1 Qtr Level Press Enter*.
6. Press **ENTER**. You will be taken back to the Levels menu. Fill your tank up halfway. (If you have a 100 gallon tank, add another 25 gallons of fuel.)

7. Highlight **HALF LEVEL** and press **ENTER**. The following message will appear: *Set Tank to Half Level Press Enter*. Press **ENTER**. You will be taken back to the Levels menu.

8. Fill your tank to the 3 quarter level. (If you have a 100 gallon tank, add another 25 gallons of fuel.) Highlight **3 QTR LEVEL** and press **ENTER**. The following message will appear: *Set Tank to 3 Qtr Level Press Enter*.

9. Press **ENTER**. You will be taken back to the Levels menu. Fill up your tank, then select **FULL LEVEL** and press **ENTER**. The following message will appear: *Set Tank to Full Level Press Enter*.

10. Press **ENTER**. You will be taken back to the Levels menu. Press **EXIT** repeatedly to get back to the main display.

Reset Calibration

The Reset Calibration command allows you to reset a fuel flow back to factory default settings. You will only need to reset calibration when you believe your fuel flow has been calibrated incorrectly.

To Reset Calibration:

1. Press **MENU**, select **SYSTEM SETUP** and press **ENTER**.
2. Highlight **BUS DEVICES** and press **ENTER**. Select the fluid level you want to reset and press **ENTER**.
3. Highlight **RESET CAL** from the fluid level menu and press **ENTER**. The following message will appear: *Press Enter to reset Calibration*.
4. Press **ENTER** to set calibration back to factory default settings. You, then, will be returned to the bus devices list.

NOTE: If you have calibrated your fluid level sensor and are having problems with the sensor's performance, be sure to check the sending unit. You can do this by using an ohm meter to test the resistance of the unit. Connect the sending unit pink wire and the ship or sending unit ground wire to the ohm meter. With the tank full, the resistance should be 33-1/2 ohms. When the tank is the empty, the resistance should be 240 ohms. If, when the tank is full or empty, the ohm readings are significantly different from the standard full (33-1/2) and empty (240) ohms levels, there is a problem with the sending unit. If the ohm readings are the same in both cases, the sending unit is stuck.

Calibrating Trim Tabs

Trim Tabs are calibrated though the Trim Tab pages menu. If the Trim Tab page is not displayed in the page screen rotation, refer to Section 2: Operation section for information on how to the add the Trim Tab page to the page screen rotation.

To calibrate Trim Tabs:

1. Make sure the Trim Tabs page is on the main display
2. Press **MENU**, select **CALIBRATE TAB** and press **ENTER**. The following message will appear: *Bring Tabs Full Up Press Enter*.
3. Adjust the position of the Trim Tabs to the Full Up Position and press **ENTER**. A second message will appear: *Run Tabs Full DN (Down)*.
4. Move the Trim Tabs into the full down position and press **ENTER**. The Trim Tabs are now calibrated. You will be taken back to the main display.



Trim Tabs menu (left). When calibrating Trim Tabs, the Full Up message (center) appears first. It is followed by the Run Tabs Full Down message (right).

Notes

Notes

Suzuki may find it necessary to change or end our policies, regulations and special offers at any time. We reserve the right to do so without notice. All features and specifications subject to change without notice. On the cover: SMIS 4" display shown.

**For free owner's manuals and other information,
visit our web site:**

www.suzukimarine.com

American Suzuki Motor Corporation
3251 E. Imperial Hwy.
Brea, CA USA 92821-2486

Printed in USA.